

Identifying the Determinants of Lapse Rates in Life Insurance: an automated LASSO approach

IME Congress 2021

- Lucas Reck
- July 7th, 2021
- joint work with Andreas Reuß and Johannes Schupp



Agenda

Introduction

Method

Model Selection

Interactions

Conclusion

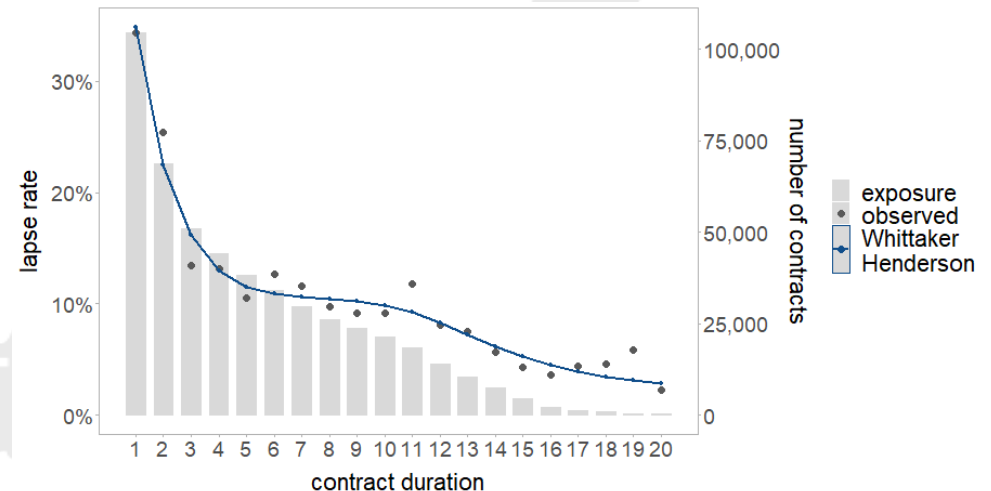
References

Introduction

Motivation and Common practice

- Lapse risk is one of the key risk drivers of life and pension business.
 - significant impact on the cash flow profile and the profitability of life insurance business
 - relevant for Asset-Liability-Management and liquidity risk
 - Market consistent valuations are based on best estimate future lapse rates.
 - e.g. Solvency II regulation (also specific risk module that addresses lapse risk)

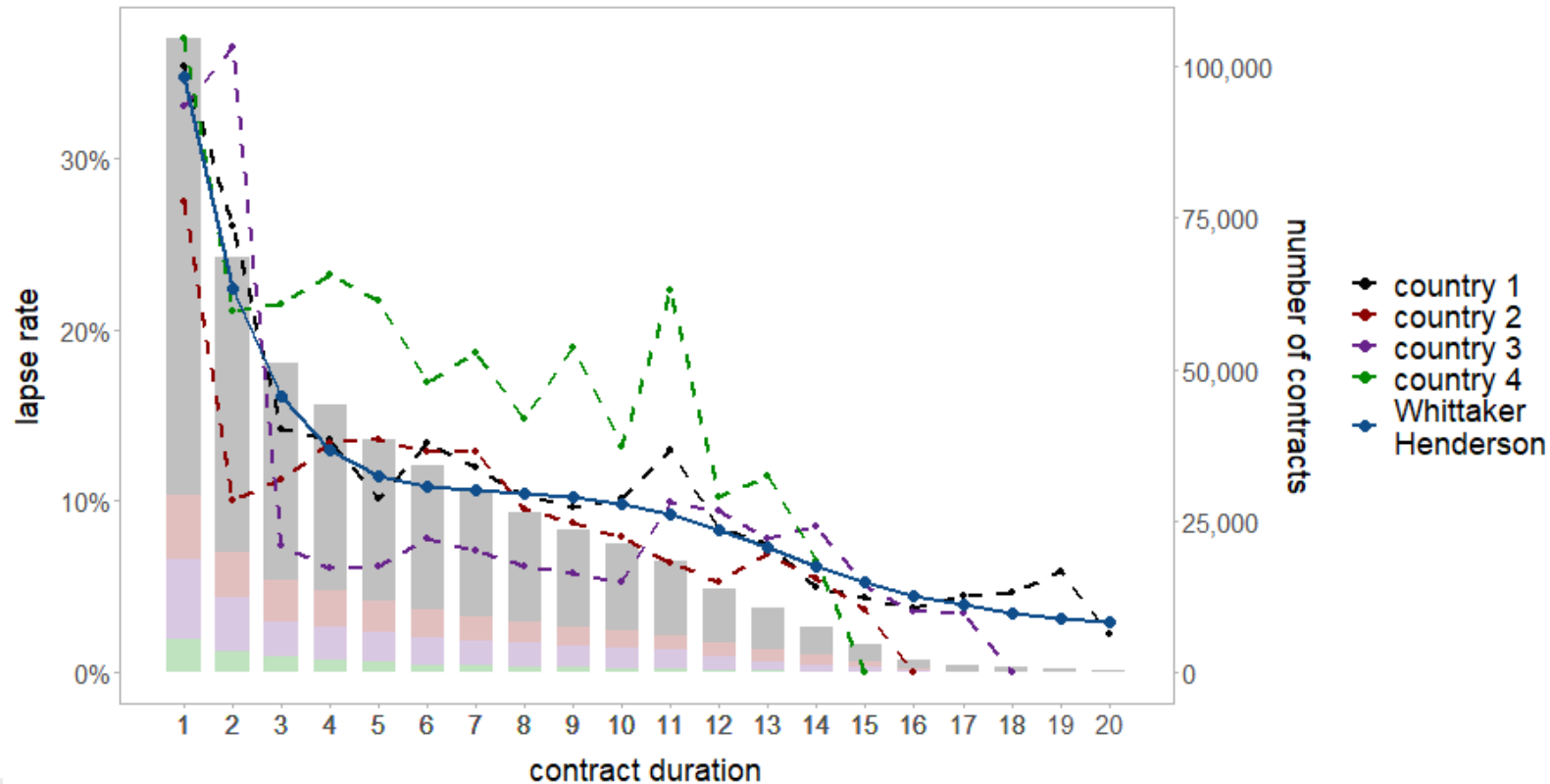
- Common practice
 - Whittaker-Henderson (univariate smoothing algorithm)
 - Prespecified covariate (e.g. contract duration)



Introduction

Whittaker-Henderson

- The insurance portfolio is typically divided into sub-portfolios based on contract characteristics like type of contract, country, or distribution channel.
- Whittaker-Henderson including covariate country



Introduction

Motivation and data set

- Multivariate models estimate lapse rates using all covariates simultaneously.
- GLM lapse model: Eling and Kiesenbauer (2014) and Barucci et al. (2020)
 - number of coefficients → considerable effort
 - risk of under- or overfitting
- Data Science methods can be a solution. We use the LASSO approach to derive a lapse model that
 - is calibrated automatically and purely data driven,
 - but remains fully interpretable,
 - is able to detect hidden structures in the covariates.
- We analyze and combine different extensions of LASSO to satisfy the needs of a practical application.
- Application
 - We use data from a European life insurer operating in four countries (run-off portfolio).
 - We use 13 covariates and a total sample size of 501,251.
 - covariates include standard data of an insurance company, e.g.:
 - contract duration, entry age, sum insured, country, contract type,...

Method

Logistic regression and LASSO

- Logistic regression

- Y_i is Bernoulli distributed.
- $E(Y_i) = p(x_i)$
- Transform $p(x_i)$ and assume a linear relationship:

$$\text{logit}(p(x_i)) = \ln\left(\frac{p(x_i)}{1 - p(x_i)}\right) = \beta_0 + \beta_1 x_{i1} + \dots + \beta_m x_{im}$$

- Likelihood function:

$$L(\beta, X, y) = \prod_{i=1}^n p(x_i)^{y_i} (1 - p(x_i))^{(1 - y_i)}$$

- LASSO (Least Absolute Shrinkage and Selection Operator)

- Include a regularization term:

$$\min -\log(L(\beta, X, y)) + \lambda \sum_{j=1}^J g(\beta_j)$$

Shrinkage-Factor: $\lambda \geq 0$

Controlling the impact of regularization and goodness-of-fit

Regularization:

Penalty term for the coefficients

Regular Lasso: $g(\beta_j) = \sum_{i=1}^{p_j} |\beta_{j,i}|$

Method

Extension: Fused LASSO and Trend Filtering - Tibshirani and Taylor (2011)

■ Now we extend the LASSO: $\min -\log(L(\beta, X, y)) + \lambda \sum_{j=1}^J g_j(\beta_j) \rightarrow$ Devriendt et al. (2018)

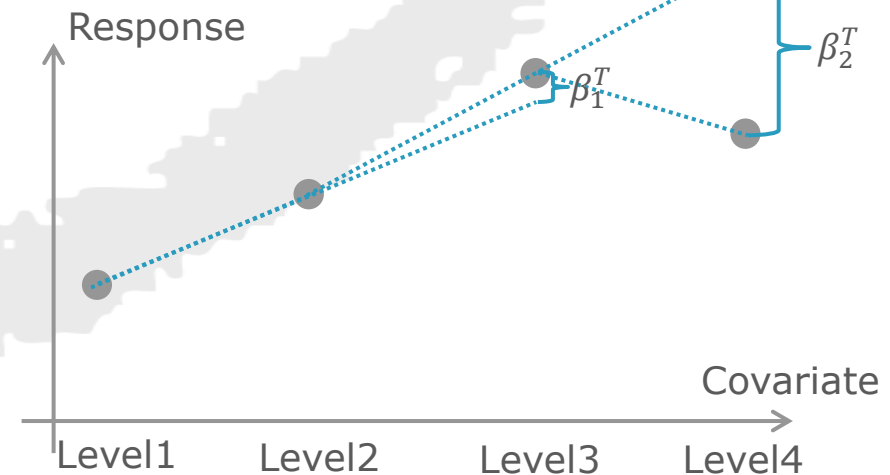
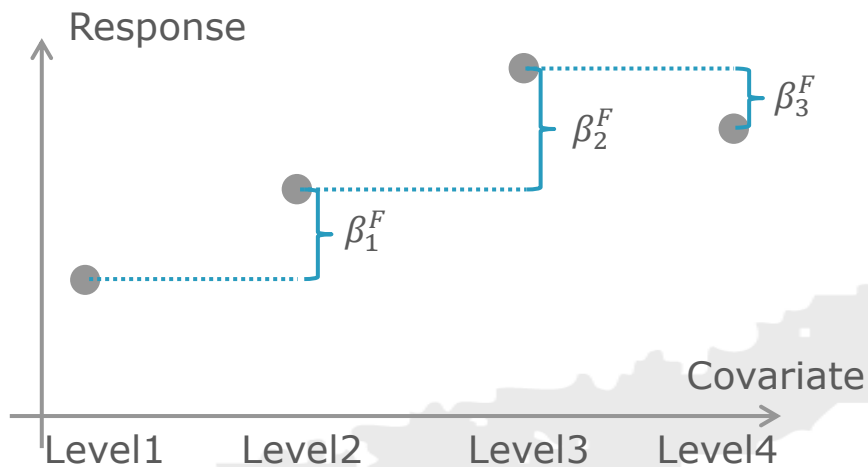
■ Regular LASSO: $g_R(\beta_j) = \|\beta_j\|_1 = \sum_{i=1}^{p_j} |\beta_{j,i}|$

■ Fused LASSO:

$$g_F(\beta_j) = \sum_{i=2}^{p_j} |\beta_{j,i} - \beta_{j,i-1}| =: \sum_{i=2}^{p_j} |\beta_{j,i}^F|$$

■ Trend Filtering:

$$g_T(\beta_j) = \sum_{i=3}^{p_j} |\beta_{j,i} - 2\beta_{j,i-1} + \beta_{j,i-2}| =: \sum_{i=3}^{p_j} |\beta_{j,i}^T|$$

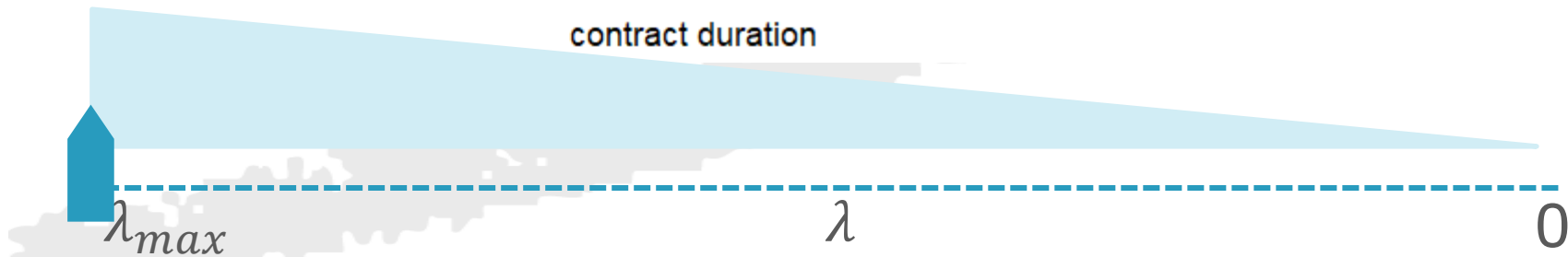
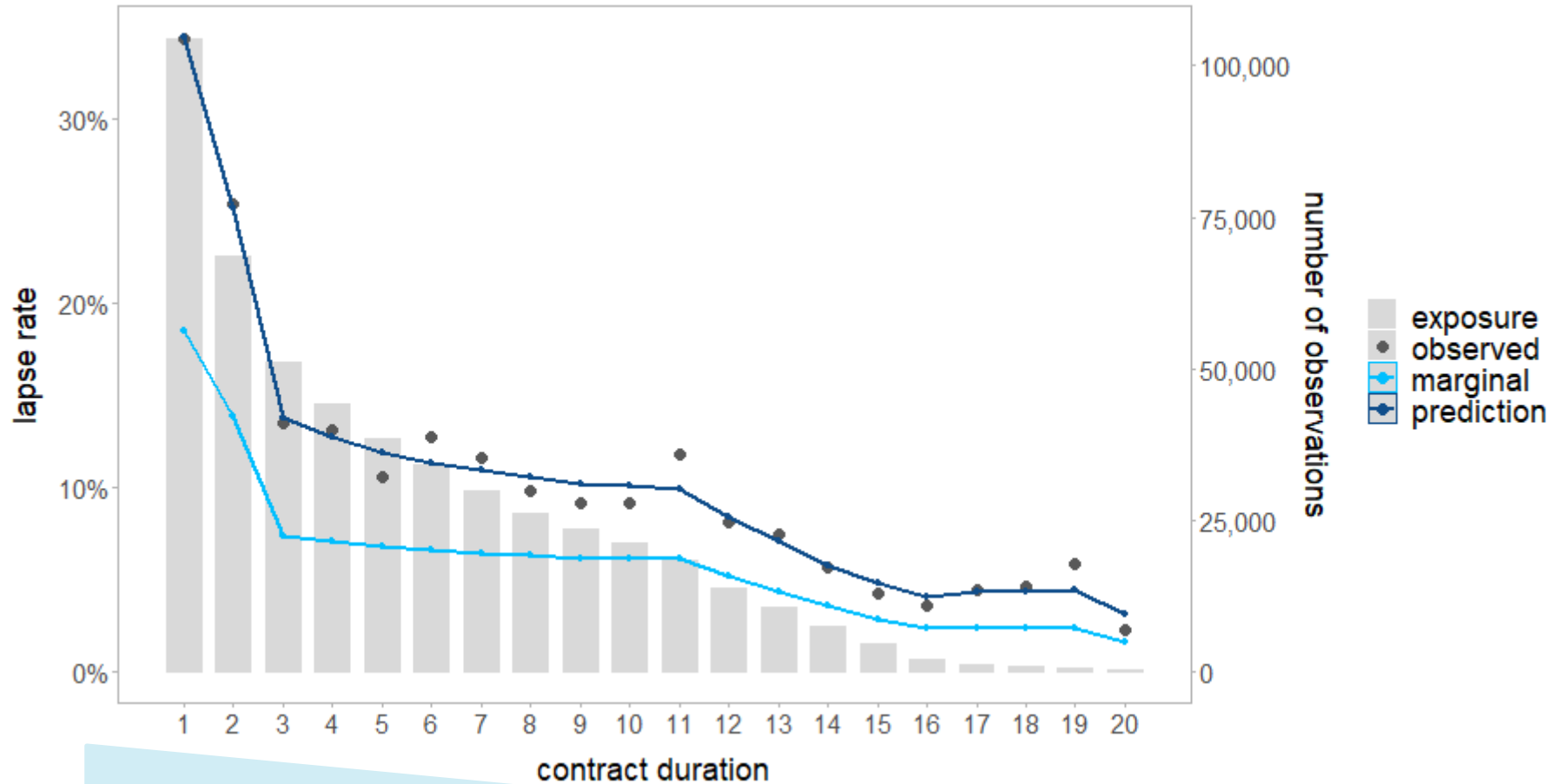


Model Selection

- R interface for H2O
- Assign a penalty term for each covariate:
 - Contract duration → trend
 - Entry age → fused
 - Sum insured → trend
 - Country → regular
 - ...
- Hyperparameter λ is based on 5-fold cross validation with one standard error rule.
- Residual Deviance as measure for goodness of fit

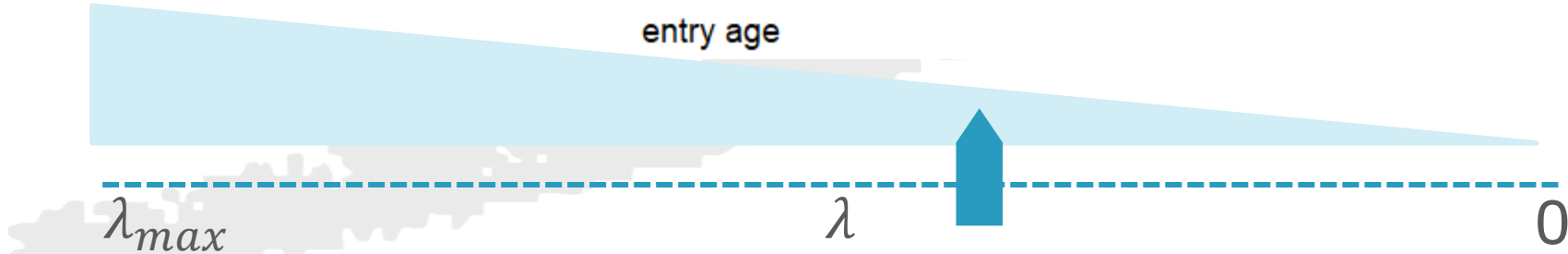
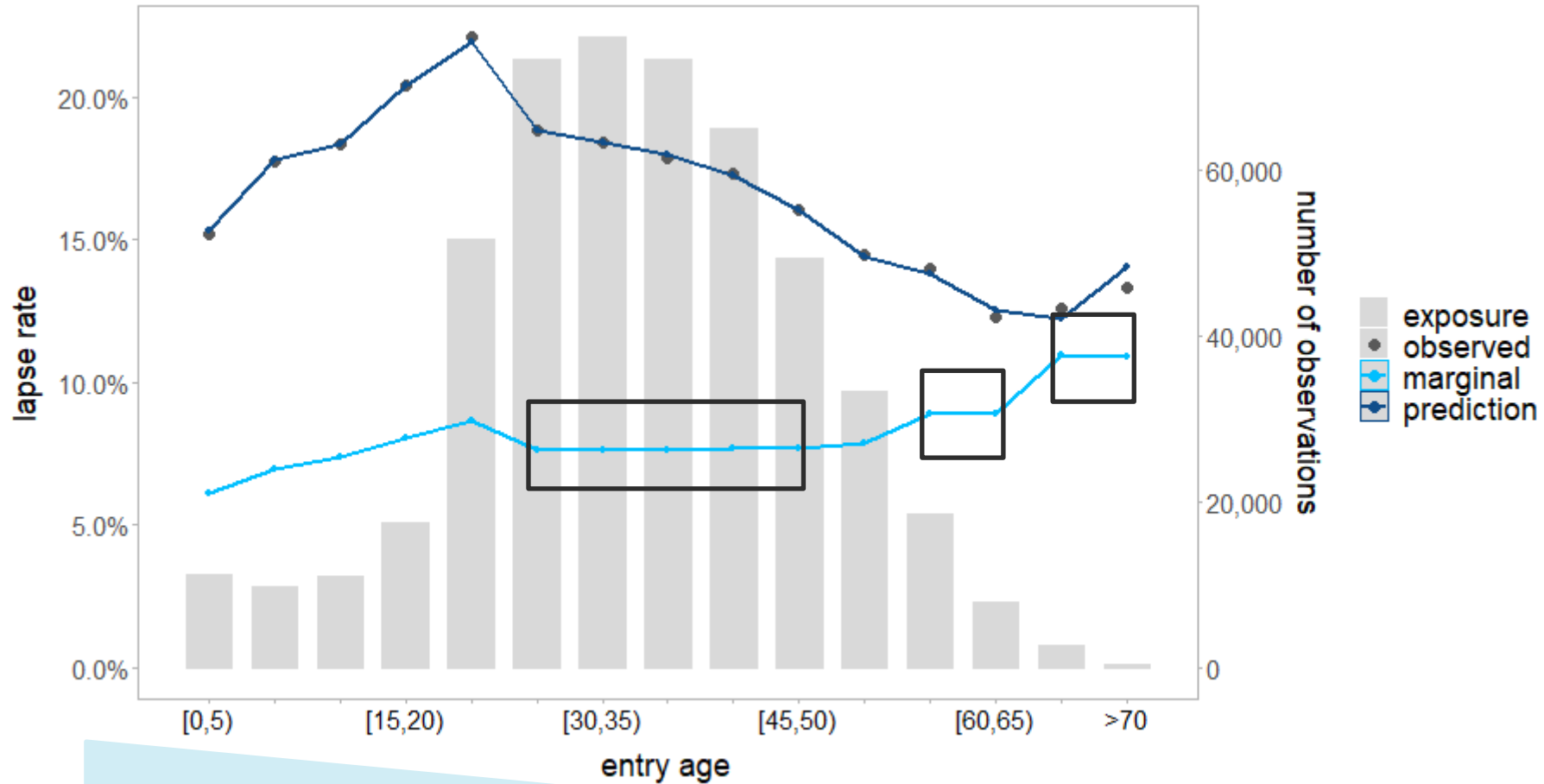
Model Selection

Trend filtering for contract duration



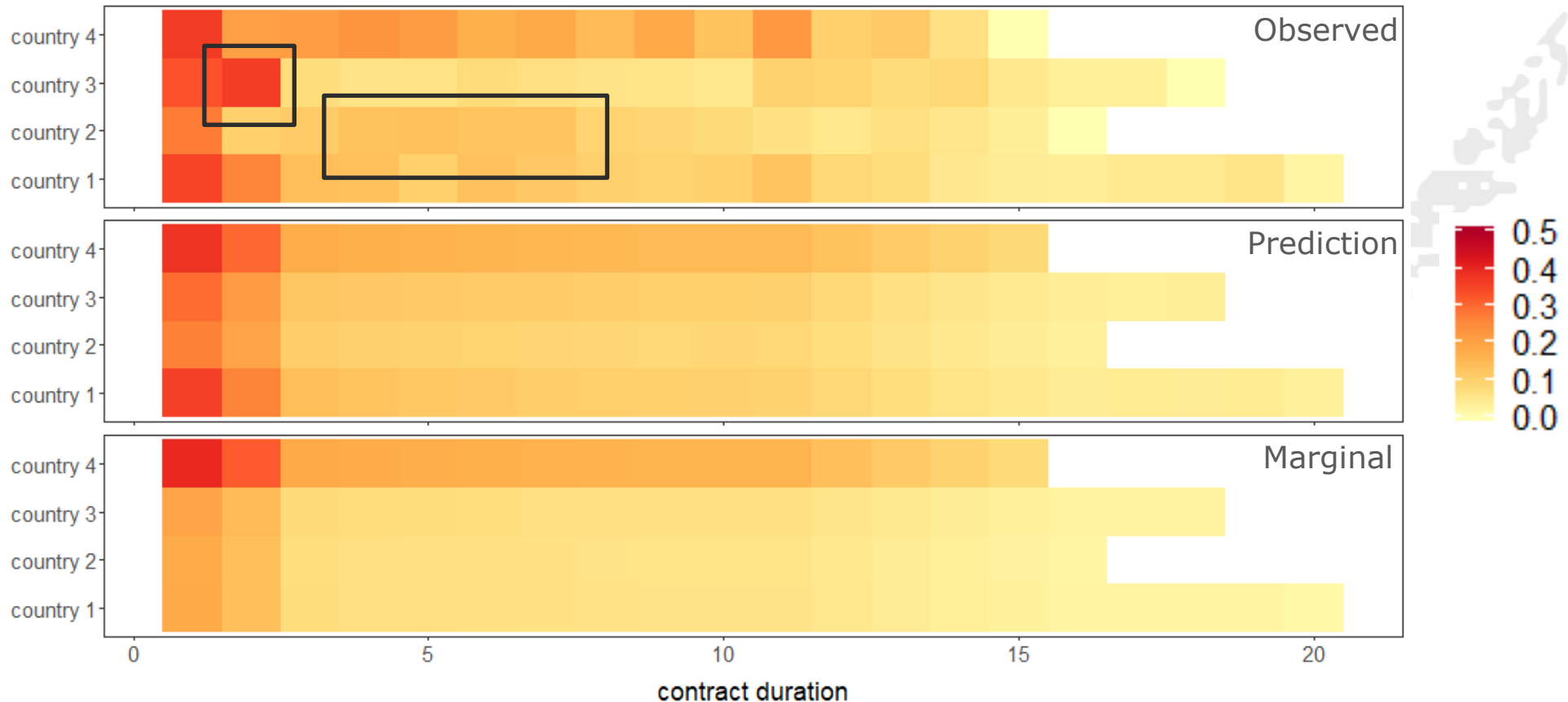
Model Selection

Fused Lasso for entry age



Interactions

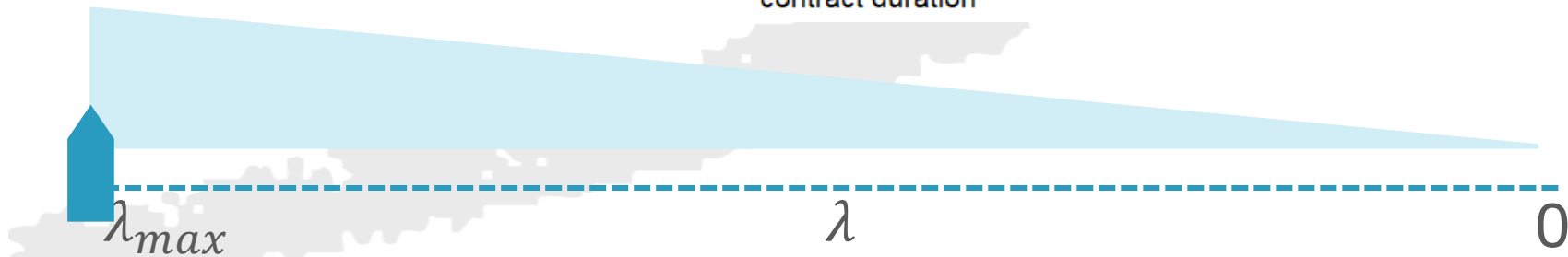
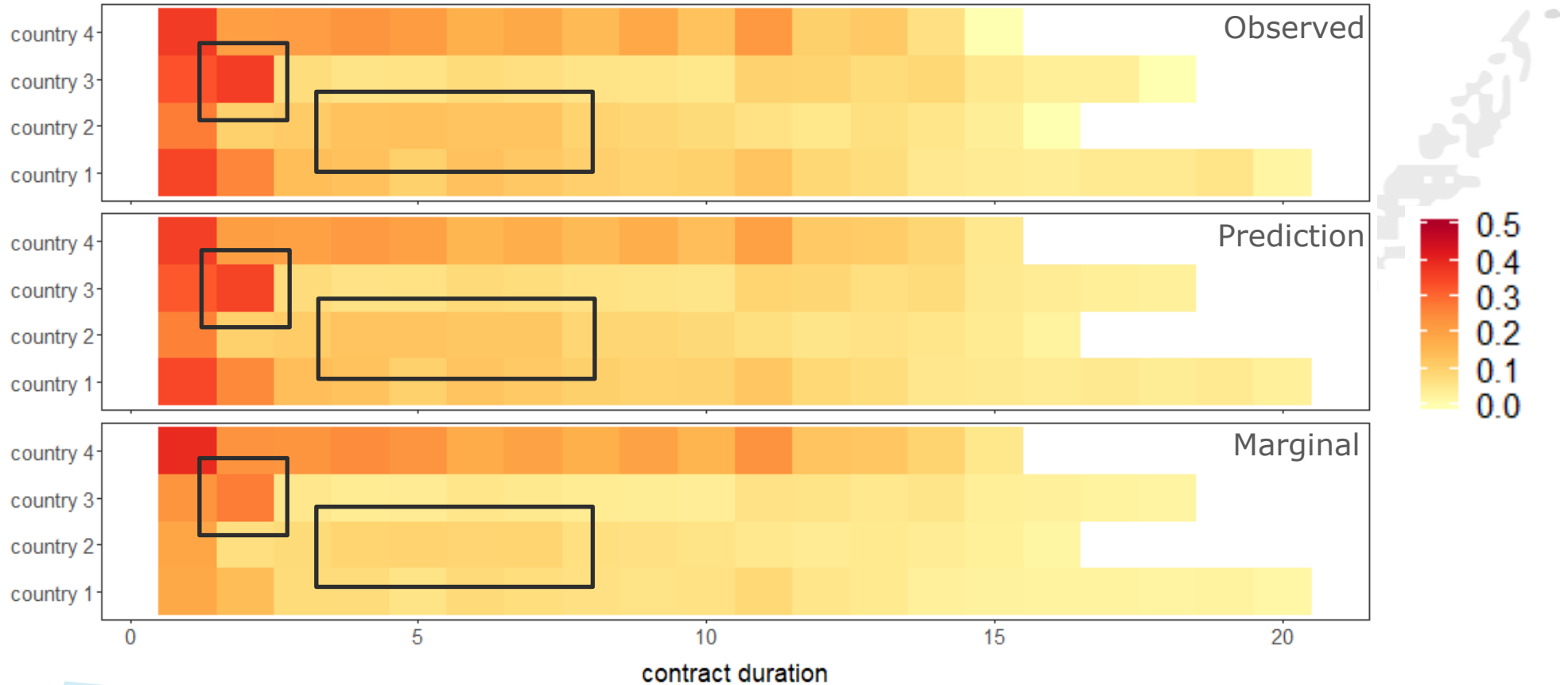
Motivation – Problem of the model without interactions



- Impact of contract duration on observed lapse rates differs for the individual countries
- Model without interaction does not capture this
- We want to include the interaction contract duration - country

Interactions

Model with the interaction contract duration - country



Conclusion

■ Results:

Model	1 - Deviance/Null Deviance
Intercept Only	0%
Whittaker-Henderson	6.7%
LASSO without interaction	11.0%
LASSO with interaction	11.7%

+64%
+6%

■ Advantages - The resulting model

- is multivariate and estimates lapse rates using all covariates simultaneously,
- is calibrated automatically and purely data driven,
- remains fully interpretable,
- is able to detect hidden structures in the covariates.

■ Outlook on further research questions:

- Offset model
- Extrapolation
- Other machine learning algorithms

References

- Eling, M. and Kiesenbauer, D. (2014). What Policy Features Determine Life Insurance Lapse? An Analysis of the German Market. *Journal Risk and Insurance* 81: 241-269
- Barucci, E., Colozza, T., Marazzina, D. and Rroji, E. (2020). The determinants of lapse rates in the Italian life insurance market. *Eur. Actuar. J.* 10, 149 - 178
- Tibshirani, R. and Taylor, J. (2011). The solution path of the generalized lasso. *The Annals of Statistics* 39(3), 1335-1371
- Devriendt, S., Antonio, K., Reynkens, T., & Verbelen, R. (2018). Sparse regression with multi-type regularized feature modeling. *Insurance: Mathematics and Economics*, 96, 248–261.
- Kiesenbauer, D. (2012). Main Determinants of Lapse in the German Life Insurance Industry. *North American Actuarial Journal* 16:1, 52–73.
- Milhaud, X. and Dutang, C. (2018). Lapse tables for lapse risk management in insurance: a competing risk approach. *European Actuarial Journal* 8, 97–126.
- Tibshirani, R., Saunders, M., Rosset, S., Zhu, J., & Knight, K. (2005). Sparsity and smoothness via the fused lasso. *Journal of the Royal Statistical Society: Series B (Statistical Methodology)* 67: 91–108.

Contact

Johannes Schupp

+49 731 20644-241
j.schupp@ifa-ulm.de



Lucas Reck

+49 731 20644-239
l.reck@ifa-ulm.de



Andreas Reuß

+49 731 20644-251
a.reuss@ifa-ulm.de

